


IPSWICH
EVENTS AND
ENTERTAINMENT
CENTRE

Conferences & Meetings Collection





OUR STORY

The Ipswich Events and Entertainment Centre is situated in a central location only 30 minutes west of Brisbane and an hour east of Toowoomba.

The Centre incorporates the Ipswich Turf Club which hosts around 46 thoroughbred meetings per year including the famous Ipswich Cup.

The venue opened the newest Events Centre in Ipswich in 2020, the Grange Lounge, and now offers guests an abundance for choice when planning their next event. From old charm to the most contemporary modern facilities, the Ipswich Events and Entertainment Centre provides exceptional service and hospitality. The Grange Lounge can host up to 260 people banquet style and incorporates state of the art audio visual equipment.

The venue also boasts the Eye Liner Lounge, perfect for those dining occasions of up to 120 people. The newly refurbished old tote building now housing the Ipswich Racing Museum is also an ideal place to entertain.

Our large outside covered and uncovered areas are perfect for any large events such as family fun days, markets, expos and trade shows. We offer on-site complimentary parking for your guests and are located just 1.5km from the Bundamba railway station.

Our functions team can assist you with any event, such as wedding receptions & ceremonies, birthdays, engagements, hens/bucks, anniversary, school formals, Christmas parties, funeral services & wakes, reunions & formals, conferences & seminars, workshops, board meetings, charity events and more.

GRANGE

Cocktail: 500 Seated: 260 Theatre: 300 Classroom: 100

A spectacular venue overlooking the parade enclosure makes this space suitable for any occasion. The largest function room on site, the Grange Lounge offers a contemporary venue that will impress your guests from the moment they arrive.

Situated in the new Events Centre the Grange Lounge offers guests with a first-class venue suitable for weddings, conferences or after five drinks.

The space can be divided into two separate rooms offering conferences a second break-out area. The northern room has a separate staircase entry from the breezeway. Lift access is available.

EYELINER

Cocktail: 230 Seated: 120 Theatre: 100 Classroom: 32

Enter via the grand terrazzo staircase to the newly refurbished Eye Liner. The private and elegant space is suitable for every occasion including weddings, celebrations or presentations.

Situated at grandstand level, the Eye Liner includes a fully licensed private bar and lounge break off area.

The newly refurbished room also offers a private area for the hosts to take five. Ideally suited as a bridal powder room or change area, this extra added bonus will be a welcome addition to any premium function.

Lift access is available.

IPSWICH RACING MUSEUM

Cocktail: 100 Theatre: 40 Classroom: 20

The Ipswich Racing Museum is located on the ground floor close to the main entrance. The refurbished building was initially established in 1950 to house the tote for the Ipswich Turf Club. Now it tells the history of racing in the region with the journey displayed on the walls.

The Museum is the ideal venue for a small board room lunch or workshop or a cocktail function spilling out under the awning. The room has new flooring, bar and customised lighting. There is easy wheelchair access.

FORECOURT

A modern new space perfect for markets, expos or outdoor entertaining. The new courtyard is located at the main entrance and leads people to the Events Centre. The concrete floor is ideal for setting up stalls and displays with easy access to power.

This space is also well lit and suitable for evening events and has easy off the street access. The Forecourt has suitable wheelchair access.

TRACKSIDE

Cocktail: 250 Seated: 120 Classroom: 15

The Trackside is located in front of the mounting yards at the winning post. The area is fully undercover so you don't have to worry about the weather but you still get the full racing experience. With a small airconditioned room attached, the function space caters to all guests.

Trackside is the ideal venue for a race day function but can also be utilised for a small meeting.

CORPORATE BOX

Cocktail: 20

The Corporate Box is located at the top of the grandstand just past the winning post. This premium location has amazing views of the track where you will not miss a thing.

The Corporate Box is the ideal venue for a small cocktail function on race day.

GRANGE GARDENS

Cocktail: 500

Grange Gardens is located just below Grange. It is an outdoor space that is perfect for large race day functions for sporting clubs, charity events and Christmas parties.

Situated beside the mounting enclosure and just past the winning post, Grange Gardens is ideal for entertaining guests on a race day.

This space also has access to a bar and tote facilities. Pending availability.

VIEWING TERRACE

Cocktail: 500

This is a prime spot to have an outdoor function overlooking the track. It includes an undercover area for seating plus a grassed area rolling down to the track. Umbrellas placed along the grass provides extra shade for guests while enjoying an outdoor event.

This function space is situated at the winning post and beside the stables, which is ideal for race enthusiasts.

This space also has access to a bar and tote facilities. Pending availability.

ROOM HIRE

Newly renovated indoor and outdoor venues give you a big choice for your event. Enjoy the sunshine and fresh air, beautiful gardens with modern facilities and renovated function spaces.

ROOM RATES

Grange Lounge ~ \$500

Cocktail: 500 Seated: 260 Theatre: 300 Classroom: 100

Grange Lounge Half ~ \$350

Cocktail: 250 Seated: 120 Theatre: 150 Classroom: 50

Grange Gardens ~ \$500

Cocktail: 500

Eye Liner Lounge ~ \$350

Cocktail: 230 Seated: 120 Theatre: 100 Classroom: 32

Ipswich Racing Museum ~ \$200

Cocktail: 100 Theatre: 40 Classroom: 20

Trackside ~ \$350

Cocktail: 250 Seated: 120 Classroom: 15

Viewing Terrace ~ \$200

Cocktail: 500

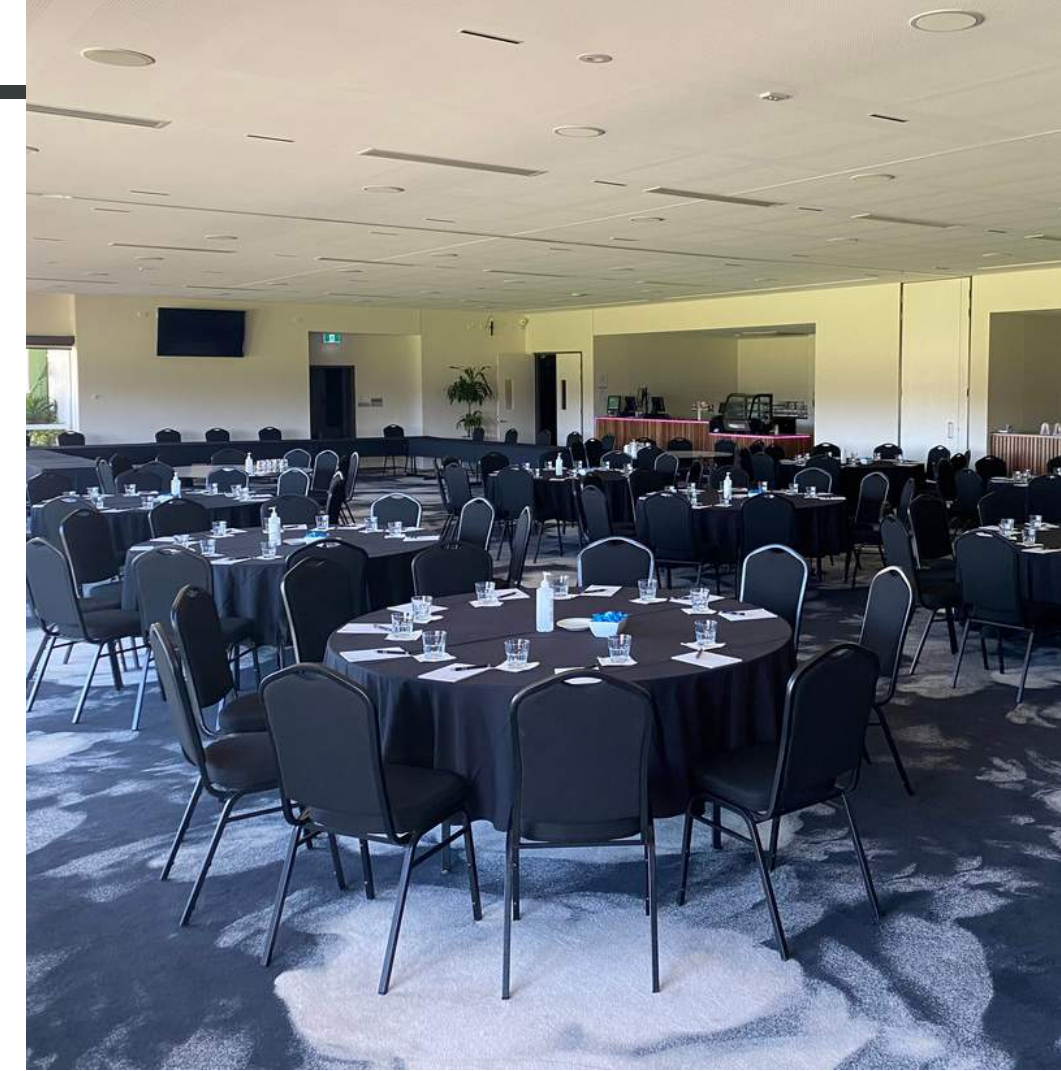
Corporate Box ~ \$200

Cocktail: 20



ROOM SPACE

Function Space Name	Area	Length	Width
The Grange	330m ²	23.6m	14m
The Grange Half	165m ²	11.8m	14m
Ipswich Racing Museum	145m ²	15.2m	9.6m
Eye Liner Lounge	158m ²	22m	7.2m
Trackside Lounge	240m ²	21m	11m
Viewing Terrace	890m ²	32m	24m
Outdoor Area	80,000m ²		



Function Package



Function Inclusions

All function bookings include the following (subject to availability):

Six hours of function room hire

Linen, tables & chairs

Water station

Wireless microphone, lectern and large television screens for presentations and videos

Projector screen hire

Air-conditioning

On-site complimentary parking



Additional Equipment

Data projector - \$130 (complimentary with food and beverage package)

Flip chart - \$40

Additional pads, pens & mints - \$4 per person

PACKAGES

CONTINENTAL BREAKFAST BUFFET OR SERVED ON TABLE *\$25 PER PERSON*

- Chilled Orange Juice
- Freshly Brewed Arabica Coffee and Selection of Teas
- Seasonal Fruit Platter
- Plain Croissants Served with Fruit Conserves
- Ham and Cheese Croissant
- Assortment of Danish Pastries

DIETARY REQUIREMENTS

We will plan your meal accordingly, so all guests are satisfied.

Our function planner will work with you to ensure all dietary requirements of your guests are adequately catered for. Most of our menus can be simply modified, otherwise alternative meals can be arranged.

Any special dietary requirements and final numbers must be provided 2 weeks prior to your event.



MENU

Minimum: 40pax

FULL BREAKFAST BUFFET

\$37 per person

- Chilled Orange Juice
- Freshly Brewed Arabica Coffee and Selection of Teas
- A Selection Cereals and Milk
- Assorted Croissants & Danish Pastries Served with Fruit Conserves
- Seasonal Fruit Platter
- Grilled Bacon
- Chipolata Sausages
- Parmesan Crusted Roma Tomatoes
- Scrambled Eggs
- Hash Browns



MENU

Minimum: 40pax

PLATED BREAKFAST

\$38 per person

- Chilled Orange Juice
- Freshly Brewed Arabica Coffee and Selection Of Teas
- Bircher Muesli

And One Selection Plated Hot Breakfast Dish:

- Smashed Avocado, Feta, Rocket, Poached Eggs, Slow Roasted Tomato, Sourdough Toast
- Spanish Omelette, Potato, Saffron, Chorizo, Onion, Garlic
- Big Breakfast, Scramble Egg Turkish Toast, Grilled Bacon, Chipolatas Sausage, Grilled Tomato
- Silver Dollar Pancake, Berry Compote, Vanilla Cream
- Vegetarian Frittata, Eggs, Fetta, Cheddar, Spinach, Onion



DAY DELEGATE PACKAGE 1

Requires minimum 70 pax or \$ 3700 minimum spent

FULL DAY

\$60 per person

- Linen, Tables and Chairs
- Room Hire 8:30am – 5pm
- PA System and Cordless Hand-Held Microphone
- On-Site Secluded Parking
- Whiteboard & Markers
- Projector Screen (Grange Room)
- Iced Water and Mints
- Pads And Pens
- 50" Television Screens for Audio Visual

On Arrival

- Freshly Brewed Arabica Coffee and Selection of Teas
- Upgrade With Assorted Danish Pastries \$6 Per Person

Morning Tea

- Freshly Brewed Arabica Coffee and Selection of Teas
- Chef Choice of a Sweet, Savoury or Healthy Option, And Seasonal Fruit Platter

Lunch

- Selection Of Sandwiches, Wraps, and Quiches Accompanied by Orange Juice
- Freshly Brewed Arabica Coffee and Selection of Teas

Afternoon Tea

- Freshly Brewed Arabica Coffee and Selection of Teas
- Chef Choice of a Sweet, Savoury or Healthy Option, And Seasonal Fruit Platter



DAY DELEGATE PACKAGE 2

Requires minimum 70 pax or \$ 4500 minimum spent

FULL DAY

\$74 per person

On Arrival

- Freshly Brewed Arabica Coffee and Selection of Teas
- Upgrade With Assorted Danish Pastries \$6 Per Person

Morning

- Freshly Brewed Arabica Coffee and Selection of Teas
- Chef Choice of a Sweet, Savoury Or Healthy Option, And Seasonal Fruit Platter

Lunch

Hot Lunch Buffet to Include

- One Roast or Slow and Low Cooked Meat
- Roasted Pork Collar, Gravy
- Harissa Roasted Chicken, Harissa Aioli, Moroccan Couscous
- Grain Fed Beef Rump Roast, Chimichurri Sauce and Beef Jus
- Pulled Pork Butt, Homemade BBQ Sauce
- Smoked Grain Fed Brisket, Homemade Chipotle BBQ Sauce
 - One Buffet Main Dish
- Smoked Brisket Chilli Sour Cream, Char-Grilled Corn, Guacamole
- Balinese Chicken Curry, Coconut Rice, Crispy Shallot
- Lamb & Rosemary Ragu, Pappardelle, Parmesan Crunch
- Honey, Soy Wings, Sesame, Fried Shallot, Herbs

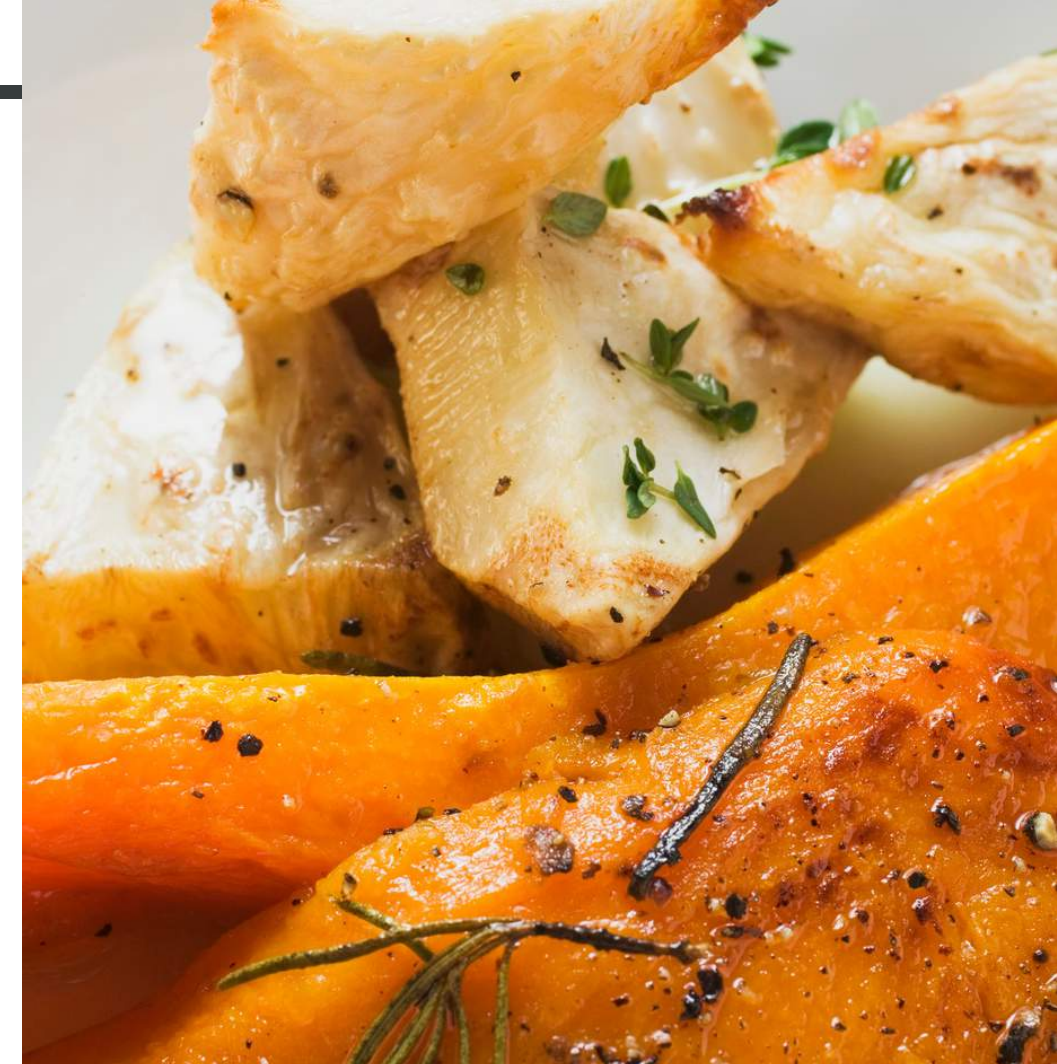
- Fresh Garden Salad
- Roast Potatoes, Pumpkin & Seasoned Vegetable
- Steamed Rice
- Thai Noodle Salad
- Freshly Baked Dinner Rolls
- Orange Juice, Mineral Water, Freshly Brewed Arabica Coffee and Selection of Tea

Afternoon

- Freshly Brewed Arabica Coffee and Selection of Teas
- Chef Choice of a Sweet, Savoury or Healthy Option, And Seasonal Fruit Platter

Inclusions

- Linen, Tables and Chairs
- Room Access 8:30am – 5pm
- PA System and Cordless Hand-Held Microphone
- On-Site Secluded Parking
- Whiteboard & Markers
- Projector Screen (Grange Room)
- Iced Water and Mints
- Pads and Pens
- 50" Television Screens for Audio Visual



MORNING OR AFTERNOON

Morning or Afternoon Tea Break

\$18 per person

- Freshly Brewed Arabica Coffee and Selection of Teas
- Chef Choice of a Sweet, Savoury, Or Healthy Option, and Seasonal Fruit Platter
- Upgrade With Assorted Danish Pastries \$6 Per Person

Sweet Option

- Fresh Baked Scone, Vanilla Cream, and Strawberry Jam
- Chocolate Brownies
- Assorted Danish
- Assorted Donuts
- Assorted Lamingtons

Savoury Option

- Homemade Sausage Roll
- Assorted Mini Quiche and Frittata
- Cheddar Cheese and Smoked Ham Muffins

Healthier Options

- Homemade Granola and Muesli Bars
- Protein Bowls
- Crisps And Dips

Sandwich and Wraps Bar

\$22 per person

Selection Of Sandwich, Wraps, and Quiches Accompanied by Orange Juice and Freshly Brewed Arabica Coffee and Selection of Teas

Continuous Tea and Coffee \$6 Per Person



LUNCH

Minimum: 40pax

Hot Lunch Buffet

\$35 per person

- One Roast or Slow and Low Cooked Meat
 - Roasted Pork Collar, Gravy
 - Harissa Roasted Chicken, Harissa Aioli, Moroccan Couscous
 - Grain Fed Beef Rump Roast, Chimichurri Sauce and Beef Jus
 - Pulled Pork Butt, Homemade BBQ Sauce
 - Smoked Grain Fed Brisket, Homemade Chipotle BBQ Sauce
- One Buffet Main Dish
 - Smoked Brisket Chilli Sour Cream, Char-Grilled Corn, Guacamole
 - Balinese Chicken Curry, Coconut Rice, Crispy Shallot
 - Lamb and Rosemary Ragu, Pappardelle, Parmesan Crunch
 - Honey Soy Wings, Sesame, Fried Shallot, Herbs
- Fresh Garden Salad
- Roast Potatoes, Pumpkin and Seasoned Vegetable
- Steamed Rice
- Thai Noodle Salad
- Freshly Baked Dinner Rolls
- Orange Juice, Mineral Water, Freshly Brewed Arabica Coffee and Selection of Tea

EXTRAS

Post Conference Refreshments

\$17 per person

- Chef Choice of One Cold and 2 Hot Canape and 1 Hour of Standard Beverage Package
- *Minimum Number of 70 Delegates for Complimentary Room Hire



TERMS & CONDITIONS

1. A deposit of \$500 is required to confirm a tentative booking. If the deposit is not paid when the signed contract is received, your function booking will remain tentative and may be offered to another party.
2. The \$500 deposit is non-refundable. The amount will be included in your final invoice amount when making payment.
3. A progress payment equal to 50% of the function booking amount for function bookings of \$5,000 or more must be made 4 weeks prior to the function booking date.
4. Full payment must be made 1 week before your function. If the full amount is not cleared funds in the nominated bank account on the function invoice by this date, your function will be cancelled.
5. If your function is cancelled less than 2 weeks before the booking date, a refund will be issued less costs incurred by Ipswich Turf Club.
6. Final numbers, dietary requirements and all other details are due 2 weeks before your event. Any amendments after this date will not be accepted.
7. A 15% surcharge will be applied to your booking if it falls on a public holiday.
8. Prices quoted are current prices (GST inclusive) and are subject to change without notice.
9. Time allocated for functions is six hours, however it is possible to have your function extended past this period for \$100 per hour (or part thereof) as agreed with the Ipswich Turf Club (ITC) Function representative. Please note that room hire for a Wake booking is for a maximum of four hours.
10. For functions which include a catering and beverage package for over 70 guests, the room hire fee is waived. Subject to minimum spend requirements. Please note, a bar tab does not qualify as a beverage package.
11. For functions where no catering is required, an additional fee of \$200 applies to the room hire charge.
12. Bar tabs must be settled on the day. Any unused bar tab credit will be refunded within 30 days of the function date subject to minimum spend requirements being met and at the discretion of the ITC.
13. Under the ITC's Liquor Licence conditions, liquor cannot be brought onto or removed from the ITC licenced site.
14. No external catering nor any other food or beverage products not provided by ITC is permitted onsite.
15. The hirer is financially responsible for any damages suffered to ITC property and equipment during the function.
16. The ITC will take necessary care but cannot accept responsibility for damage or loss of property left on the ITC premise before, during and after functions. Responsibility for any insurance lies with the hirer if he/she so desires.
17. It is the responsibility of the hirer to provide place cards, seating charts/stands, and any other specific decorations not included in your function package. Any extra costs incurred by the ITC will be charged to the function booking.
18. Access to your function room before your event can be limited due to our racing schedule and other bookings. Please speak with our functions staff for more information.
19. 18th/21st birthday parties, bucks/hens parties and any other function the ITC deem necessary will be required to pay a fee of \$350.00 per 50 guests of part thereof for security personnel. Prices subject to change without notice.
20. All functions must be finished by midnight. For functions that require bar service, last drinks will be called at 11:30pm and service will cease at 11:45pm. Any extra costs incurred by the ITC for hours beyond this will be charged to the function booking.
21. The ITC will adhere to Responsible Service of Alcohol guidelines at all times as required by law. ITC staff and representatives have the right to exclude any guest/s if they do not comply with the directions.
22. The ITC has the right to end a function without notice and without compensation if guests are abusive towards staff and/or if staff are feeling threatened. The ITC have zero tolerance towards abuse and the safety of our guests and staff is mandatory.
23. As a condition of entry, all guests must comply with all Government legislation including directives and ITC guidelines.
24. Early access time before 8am or after 4pm on weekdays and 12pm on weekends may incur a minimum charge of \$100 per hour. Prices subject to change.

IPSWICH EVENTS AND ENTERTAINMENT CENTRE

CONTACT US

T: (07) 3282 1500

E: functions@ipswichturfclub.com.au

www.ipswichturfclub.com.au



@ipswichturfclub
@ipswicheventsentertainment



@ipswichturfclub
@ipswicheventsentertainmentcentre



@ipswichturfclub